

Toothed Brake

TYPE 72

Tel: +44 (0)1388 770 360 | sales@sgtransmission.com
www.sgtransmission.com



SG Transmission

The electromagnetic toothed brake is similar in construction to the standard power-on brake, however it benefits from higher static torque due to the mechanical advantage of interlocking teeth between the driven and driving elements. Using teeth in the brake's construction gives a higher torque capability than comparable, similar sized devices.

The toothed brake gives a braking effect when the coil is energised (power-on). Therefore the toothed brake can be used to stop a rotating load when the electrical power is turned on and can be supplied with various armature styles (C.L., C.C. or C.R., see datasheet) to suit the intended design construction.

Benefits

- High torque
- Compact size
- No slip
- Zero drag torque
- Power on engagement

Features

- Insulation Class B
- Keyways to B.S. 4235
- Circlip grooves to B.S. 3673
- Optional number of teeth
- Optional voltages

Key applications

- Machine tools
- Material handling
- Security gates
- Wind turbines

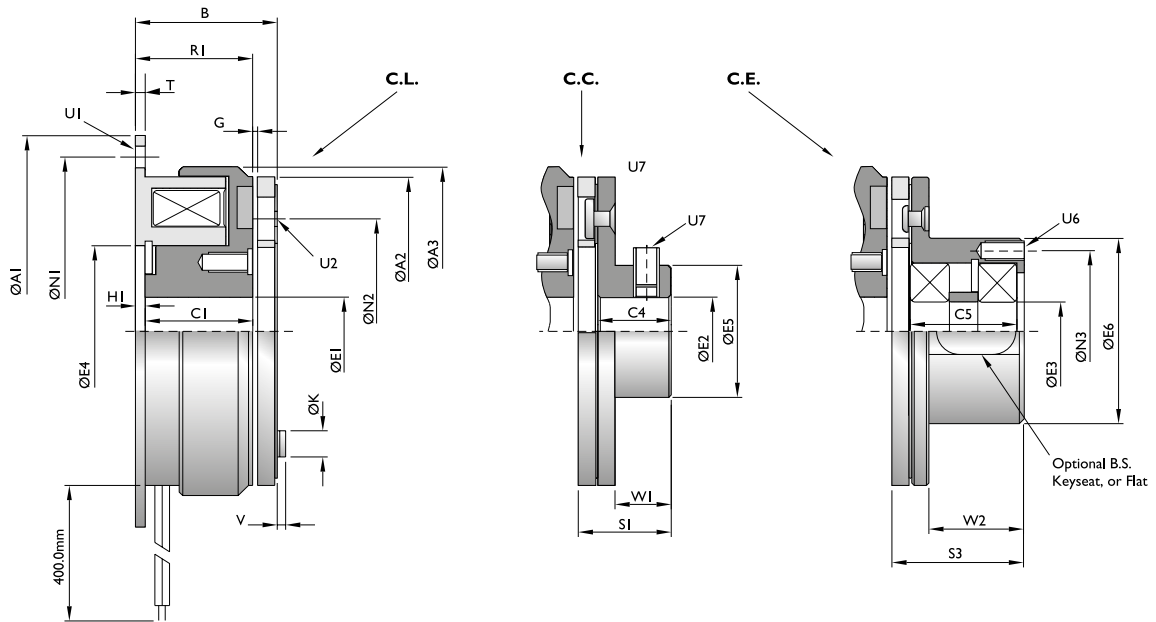


SIZE FIELD MOUNTING ARMATURE TYPE D.C. VOLTAGE

└───┬───┬───┬───┘

TB06 - TOOTHED BRAKE - CL - 24

Technical data



Size	Torque TS (Nm)	Max P20 (W)	A1 H9	A2	B	C4	Max E2 H7	E4 H8*	E5	G	H2	K	N1	N2	R2	S1	T	U1 (x4)	U2 (x3)	U7	V	W1	W4
TC06	21	15	80	63	27.1	15	17	35	27	0.3	3.5	7	72	46	20	21.9	2	4.5	3.1	M5	1.5	11.5	10.4
TC08	45	20	100	80	32	20	20	42	32	0.3	4.3	8.5	90	60	24.4	27.2	3	5.3	4.1	M5	2	16	11.3
TC10	110	31	125	100	37	25	30	52	42	0.3	5	9.5	112	76	27.5	33.5	3	6.5	5.1	M6	2	19	13.5
TC12	195	37	150	125	39.8	30	35	62	49	3	5.5	10.5	137	95	27.5	41.4	3.5	6.5	6.3	M6	3	24	17.4

* Note: During mounting of the armature, there should be an indicated run-out of no more than 0.05mm, relative to the bore of the brace (ØE4).